

CollateralNext

Transforming Collateral Data into Strategic Advantage

Clearstream's Collateral Next Suite empowers financial institutions to manage, optimize, and benchmark their collateral portfolios with precision. Combining three advanced data solutions—**Collateral Insights, Collateral Mapper, and Collateral Benchmarking**—the suite delivers a unified, intuitive experience for smarter collateral decisions.

Through intuitive dashboards and peer-based analytics, the suite transforms complex collateral data into actionable insights therefore supporting strategic allocation, risk management, and market positioning.

Key features

- **Collateral performance overview:** access a consolidated view of your collateral, lending, and repo activities. Monitor KPIs, exposures, and trends across counterparties and asset classes.
- **Automated collateral mapping:** visualize your entire collateral position and eligibility across contracts. Identify available assets, residual capacity, and optimize allocation with automated updates.
- **Peer group benchmarking:** compare your performance against anonymized peer groups. Evaluate repo rates, asset ratings, and allocation trends to align with market standards.
- **Exposure and trend analytics:** track historical developments, expected transactions, and counterparty exposures. Use predictive insights to support proactive collateral management.

Benefits

- Clear visibility into collateral positions and usage
- Faster decision-making with consolidated data
- Better market alignment through peer comparisons and benchmarks
- Improved asset allocation based on availability and eligibility
- Streamlined access via a single portal with customizable views
- Informed decisions grounded in market context and internal performance

To find out more about CollateralNext and other data products, please contact your Relationship Manager or [contact us](#).



Collateral Mapper

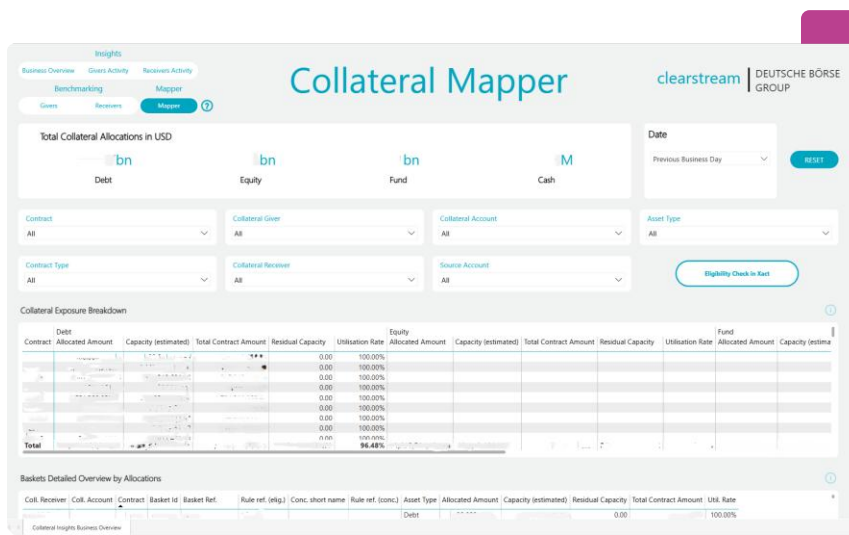
Optimize Collateral Potential and Portfolio Efficiency

Ensuring optimal asset use is key to maximize your revenue opportunities. However, managing the complexities of a collateral portfolio presents a significant challenge.

With Clearstream's **Collateral Mapper**, you can unlock the full potential of your collateral portfolio. Our intuitive dashboard transforms complex collateral usage reports into actionable intelligence by providing clear insights into the value of your assets.

Gain control of your contracts and associated eligibility rules. With end-of-day analysis and a holistic view of your portfolio, you can easily identify and allocate available securities, and assess concentration limits and residual capacity.

Enhance your collateral management processes and increase operational efficiency with Collateral Mapper.



How can you benefit from Collateral Mapper?

By maximizing the use of lower-grade collateral as a cost-effective alternative to pledging assets, you can make strategic decisions with greater confidence.

- Greater portfolio transparency: monitor assets across all available markets and track asset flows to maintain a clear view of your holdings.
- Comprehensive collateral exposure breakdown: gain a detailed view of all contracts across participant codes. Identify opportunities to optimize collateral allocation based on utilization rates.
- Eligibility and concentration rules: understanding basket-level rules, concentration limits, and residual capacity to efficiently navigate constraints and make informed decisions.
- Customizable dashboard: provide asset type breakdowns and historical trends down to a D-1 snapshot of your collateral allocation details over the last 30 days. The dashboard consolidates EOD data from both CmaX and Swift sources.
- Capacity and asset utilization: review historical capacity trends and asset utilization, broken down by asset type.
- Security holdings breakdown: view asset positions linked to source accounts to take necessary action.

Key data points and KPIs available in Collateral Mapper

Collateral Mapper provides a detailed view of your collateral activities through essential metrics:

- Asset flows across available markets
- Contract-level exposure by participant code
- Basket-level eligibility and concentration limits
- D-1 snapshots of collateral allocation over 30 days
- Historical capacity and asset utilization by asset type
- Security holdings linked to source accounts

To find out more about Collateral Mapper and other data products, please contact your Relationship Manager or [contact us](#).

Collateral Insights

Your Gateway to Enhanced Collateral Management

Tracking and analyzing collateral activity can be a time-consuming task. With scattered data and manual processes, gaining a complete picture of your collateral portfolio and identifying potential risks can be a challenge.

Clearstream's **Collateral Insights** is your solution for streamlined collateral management. This intuitive platform consolidates your collateral data into a single, user-friendly dashboard, providing a holistic view of your collateral and lending activities.

With automated insights and customizable reporting, you can quickly identify trends, assess risks and make informed decisions to optimize your collateral management strategies.

How can you benefit from Collateral Insights?

The Collateral Insights empowers clients to take control of their collateral management with a clear, comprehensive view of their portfolio. By leveraging this intuitive tool, you can gain data-driven insights, optimize the use of collateral, mitigate risk and make strategic decisions to strengthen your financial position.

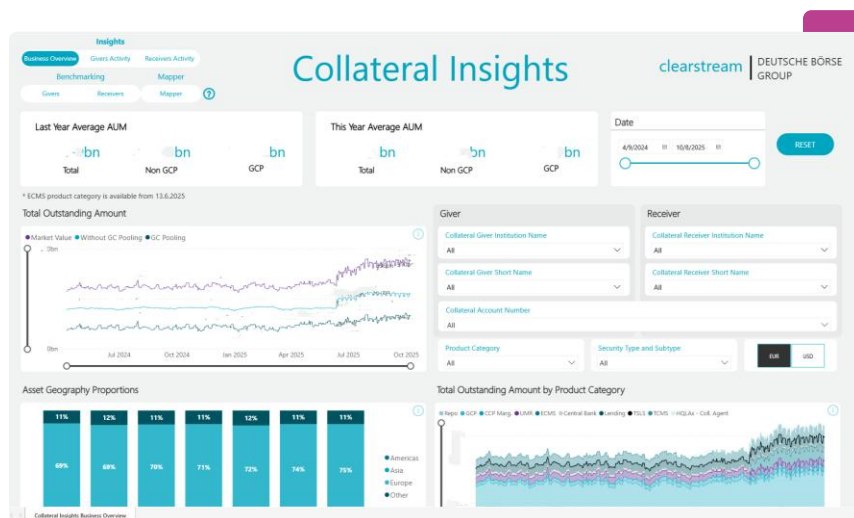
- **Dynamic dashboard with end-of-day updates:** gain insights into your collateral activity and performance, anytime and anywhere.
- **Historical data, trend analysis and counterparty focus:** access historical data and analyze trends to understand the activities, exposures and risk profiles of your payers and receivers. This allows you to make informed decisions based on past performance and counterparty behavior.
- **Counterparty focus:** gain a detailed understanding of your givers and receivers, including their activities, exposures and risk profiles.
- **Data-driven decision-making and enhanced transparency:** leverage comprehensive data and insights to make informed decisions and gain a clear view of your collateral activities, enhancing transparency and control.

Key data points and KPIs available in Collateral Insights

The Collateral Insights Dashboard provides a comprehensive view of your collateral activities through key metrics and data points:

- **Giver and receiver perspectives:** track Assets under Management (AuM), new accounts, active institutions and average volume changes.
- **Collateral activity and exposure:** monitor total outstanding collateral, analyze granular breakdowns, and track average haircuts, repo rates and outstanding balances.

To find out more about Collateral Insights and other data products, please contact your Relationship Manager or [contact us](#).



Collateral Benchmarking

Benchmarking Collateral. Enhancing Strategy.

Understanding how your collateral performance compares to the broader market is essential for strategic decision-making. Yet, without the right tools, benchmarking can be fragmented and time-consuming.

Clearstream's **Collateral Benchmarking**, part of the **CollateralNext** suite, simplifies this process by delivering anonymized peer data and targeted KPIs.

It enables institutions to benchmark their collateral activity across multiple dimensions, helping to uncover opportunities, refine strategies, and enhance operational efficiency.

How can you benefit from Collateral Benchmarking?

Collateral Benchmarking empowers you to:

- measure performance against anonymized peer groups.
- identify gaps and strengths in your collateral strategy.
- support pricing and allocation decisions with market-aligned data.
- enhance transparency across your portfolio.

Key data points and KPIs available in Collateral Benchmarking

Collateral Benchmarking provides a focused view of your performance through the following benchmarking metrics:

- **Volume and product distribution:** benchmark your transaction volumes and exposure across different collateral product types to identify growth areas and market positioning.
- **Asset allocation and rating comparison:** evaluate your portfolio mix and asset quality against peer standards to maintain strategic alignment and ensure high-grade collateral.
- **Repo rates and haircut efficiency:** compare your pricing and applied haircuts to optimize financial performance and reduce over-collateralization.
- **Geographic trends and market alignment:** track regional allocation patterns and align your strategy with broader market movements.

To find out more about Collateral Benchmarking and other data products, please contact your Relationship Manager or [contact us](#).

